

Equipment List - IMSC



T32/27

This document describes the equipment which will
be operated by IMSC

Contents

Declumper AND 750	2
Declumper Infeed Chute	3
Declumper / Bag Elevator	4
Grader Elevator	Error! Bookmark not defined.
Rope Washer Hauler Post.....	Error! Bookmark not defined.
Seeder ANS650	Error! Bookmark not defined.
Winch Davit	Error! Bookmark not defined.
Mussel Floats.....	Error! Bookmark not defined.
Sub Sea Floats.....	Error! Bookmark not defined.
Farm Ropes, Anchor Warps and Mainlines	Error! Bookmark not defined.
Spat Catching Rope.....	Error! Bookmark not defined.
Maintenance	Error! Bookmark not defined.
Anchor Rope and Mainlines.....	Error! Bookmark not defined.
Lashing Ropes for Droppers.....	Error! Bookmark not defined.
Navigational Buoys	Error! Bookmark not defined.
SL-B1 250	Error! Bookmark not defined.
Marine Lantern	Error! Bookmark not defined.
SL70.....	Error! Bookmark not defined.
Anchors.....	Error! Bookmark not defined.
Equipment Booklet.....	Error! Bookmark not defined.
END	Error! Bookmark not defined.

Contents

Declumper AND 750.....	2
Declumper Infeed Chute	3
Declumper / Bag Elevator	4
Grader Elevator	Error! Bookmark not defined.
Rope Washer Hauler Post.....	Error! Bookmark not defined.
Seeder ANS650.....	Error! Bookmark not defined.
Winch Davit	Error! Bookmark not defined.
Mussel Floats.....	Error! Bookmark not defined.
Sub Sea Floats.....	Error! Bookmark not defined.
Farm Ropes, Anchor Warps and Mainlines.....	Error! Bookmark not defined.
Spat Catching Rope.....	Error! Bookmark not defined.
Maintenance	Error! Bookmark not defined.
Anchor Rope and Mainlines.....	Error! Bookmark not defined.
Lashing Ropes for Droppers.....	Error! Bookmark not defined.
Navigational Buoys	Error! Bookmark not defined.
SL-B1 250.....	Error! Bookmark not defined.
Marine Lantern	Error! Bookmark not defined.
SL70.....	Error! Bookmark not defined.
Anchors.....	Error! Bookmark not defined.
Equipment Booklet.....	Error! Bookmark not defined.
END.....	Error! Bookmark not defined.



The purpose of this document is to outline the equipment used by Irish Mussel Seed Company in relation to application T32/27. Each piece of equipment will be maintained in accordance with usage and manufacturers guidelines.

Declumper AND 750



Includes:

- 10 to 12 ton/hr capacity
- Ø750mm De-clumping drum
- 950mm long Washing screen
- 1x bolt-on perforated adjustable screen (2mm to 15mm)
- 3x drive motors (De-clumping drum, Screen & Hauling wheel)
- Independent screen drive
- Stainless Steel Hauling wheel with rope stripper
- 25mm thick rubber rope strippers
- Three cleaning access doors with safety isolator
- Hydraulic plumbing & controls with SS fittings
- Manual leg tilting system (standard) Hydraulic option as per above
- 3x water control valves
- Mounting plates to weld to deck for legs
- Hydraulic requirements: 110 litres/min @ 60 bar

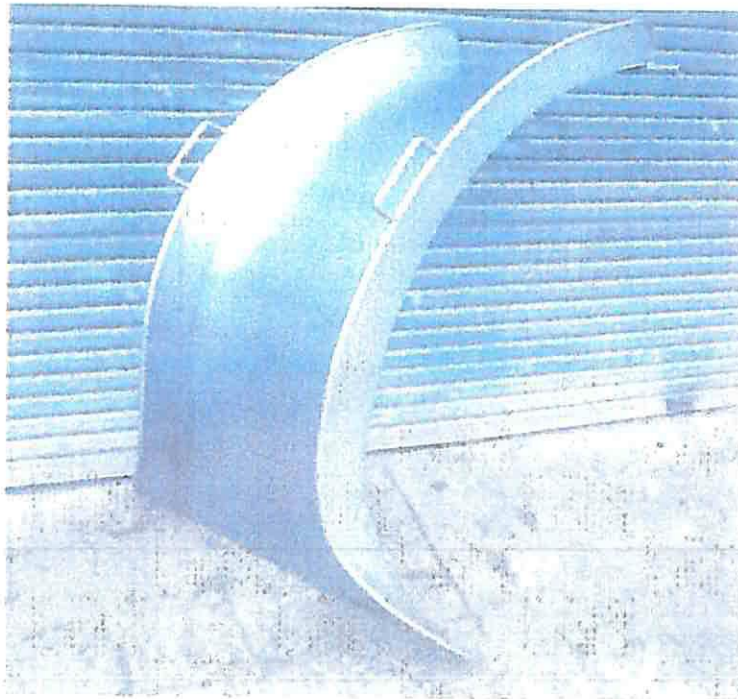
Declumper Infeed Chute



Includes:

- Stainless steel construction
- Hinging mounting brackets
- Lifting handles

Declumper Infeed Chute



Includes:

- Stainless steel construction
- Hinging mounting brackets
- Lifting handles



Declumper / Bag Elevator

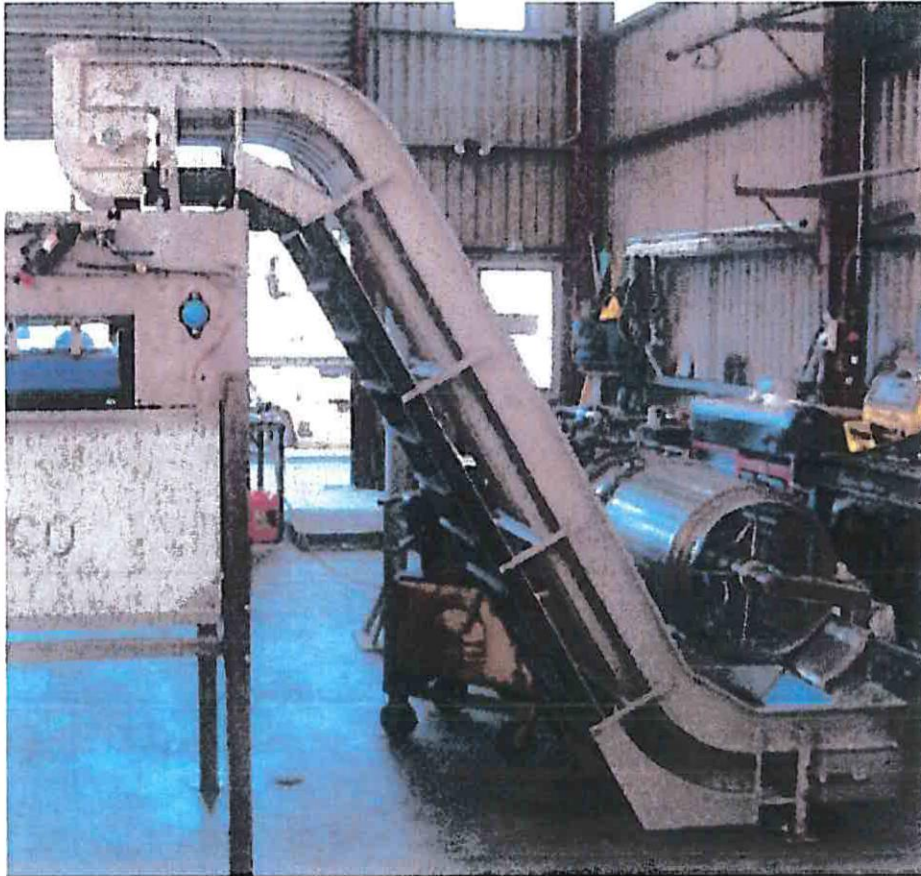


Includes:

- Stainless steel construction
- 500mm wide belt x 3300mm long
- Bag filling height range from 550mm to 1700mm
- Plastic modular belt with 75mm high upstands
- Hydraulic drive motor & hydraulic controls
- Lifting ram with hydraulic controls (access both sides of conveyor)
- Pivot mounting plate (for manual pivot only)
- Hydraulic price based on pressure compensated system
- Hydraulic requirements: 8 litres/min @ 1500psi



Grader Elevator



Includes:

- Stainless steel construction
- 400mm wide belt
- PVC heavy duty belt with bolt on Uhmwpe flights
- Hydraulic drive motor & hydraulic controls
- Mussel spreader chute on to grader

Rope Washer Hauler Post



Includes:

- Galvanised steel construction
- 2x Idler wheels -SS Hauler wheels
- Rope peeler knife
- 30 cube hydraulic motor
- Hydraulic plumbing (flow control & ball valve)
- Adjustable bag frame -Alloy / mild steel weld on doubling plate

Rope Washer Hauler Post

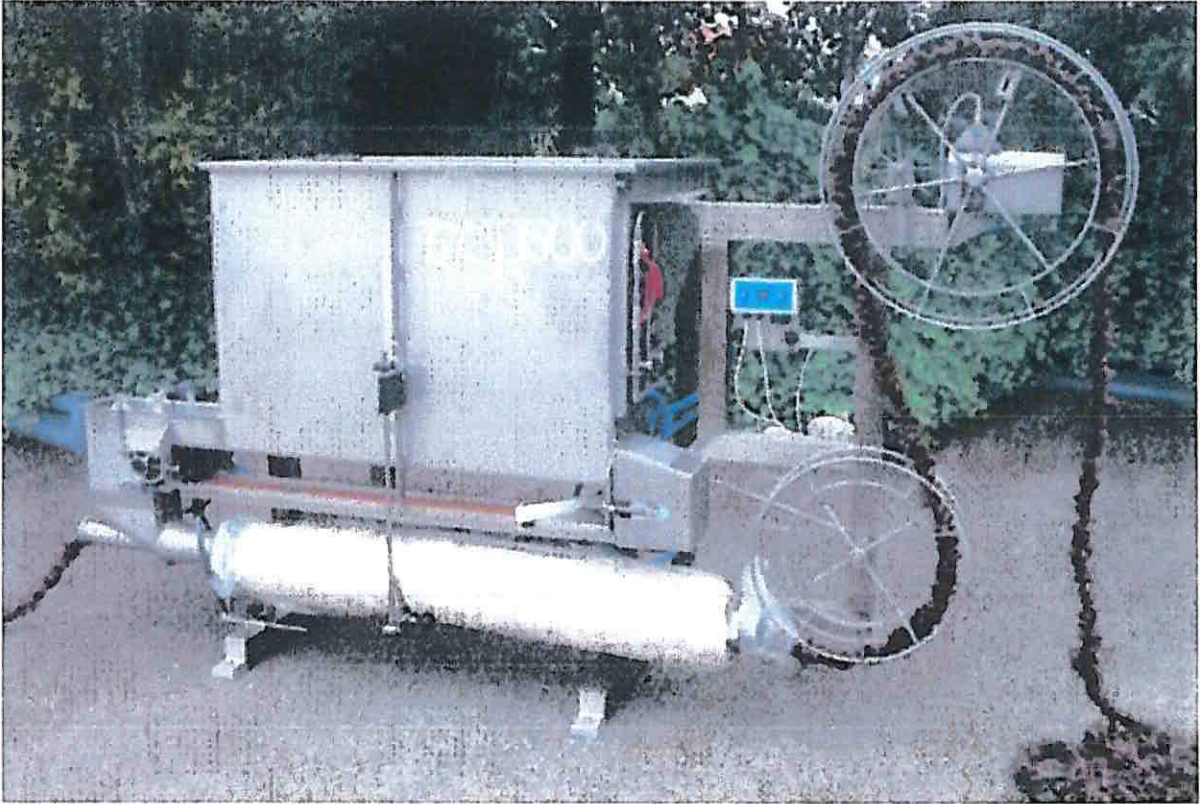


Includes:

- Galvanised steel construction
- 2x Idler wheels -SS Hauler wheels
- Rope peeler knife
- 30 cube hydraulic motor
- Hydraulic plumbing (flow control & ball valve)
- Adjustable bag frame -Alloy / mild steel weld on doubling plate



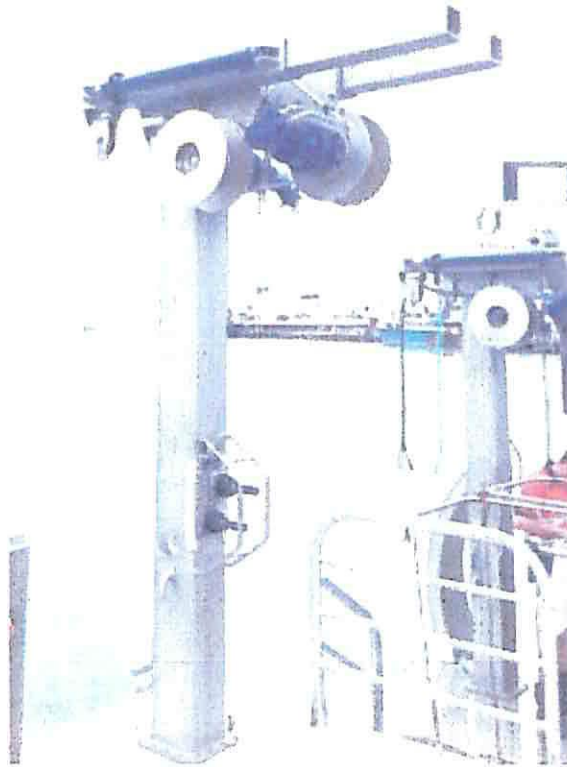
Seeder ANS650



Includes:

- Stainless steel construction
- Hopper volume = 0.65m³
- Mechanical counter for dropper length
- Hydraulic plumbing & controls
- Marinised hydraulic motors
- To suit 75, 90 & 110mm PVC pipes
- Hinging Drive wheel bracket (for storage & access)
- Fully adjustable PVC pipe support bracket
- Quick release system for PVC pipes
- Hydraulic plumbing is priced for Pressure compensated pump
- Hydraulic plumbing for Fixed pump

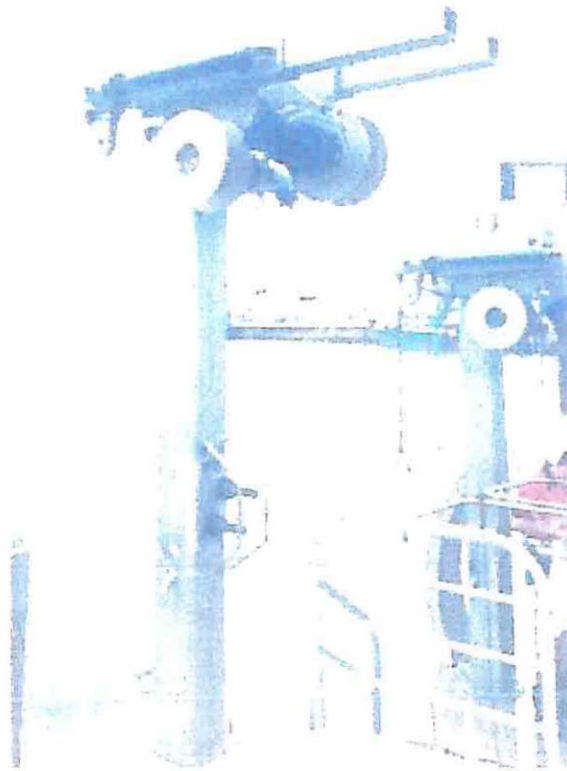
Winch Davit



Includes:

- Brevini braked gearbox with 200cc hydraulic motor
- Certified design 1500 kg SWL per arm -Galvanised steel construction
- 250x250mm SHS posts -Twin winch drums
- Twin 800mm telescopic extension (hydraulic)
- Stainless steel deck mounting flange with steel doubling plate
- Rope tie off hooks
- Hydraulic hose work inside davit post.
- Hydraulic hoses to the rams and motors (SS tube work shown in photo)
- Hydraulic control valve

Winch Davit



Includes:

- Brevini braked gearbox with 200cc hydraulic motor
- Certified design 1500 kg SWL per arm -Galvanised steel construction
- 250x250mm SHS posts -Twin winch drums
- Twin 800mm telescopic extension (hydraulic)
- Stainless steel deck mounting flange with steel doubling plate
- Rope tie off hooks
- Hydraulic hose work inside davit post.
- Hydraulic hoses to the rams and motors (SS tube work shown in photo)
- Hydraulic control valve

Mussel Floats

Description:

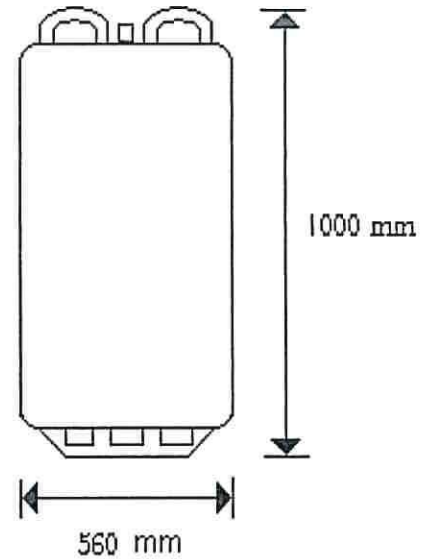
Aquaculture 'Mussel' Float (200 Series)

Method of Fabrication:

Extrusion Blow moulded.

Materials:

Body	High Density Polyethylene
Closure	Brass valve with Stainless Steel screw stud
Gasket	EPDM



Colour: Grey ref. 17736

Dimensions in mm:

Overall Height	1000 mm +/- 20 mm
Float Diameter	560 mm +/- 20 mm

Tare Weight: 10 kg

Nominal Capacity:

220 Litres

Pressure

0.2 Bar is introduced by Gem Plastics Limited prior to dispatch.

It is recommended that this pressure be maintained during the working life of the float.

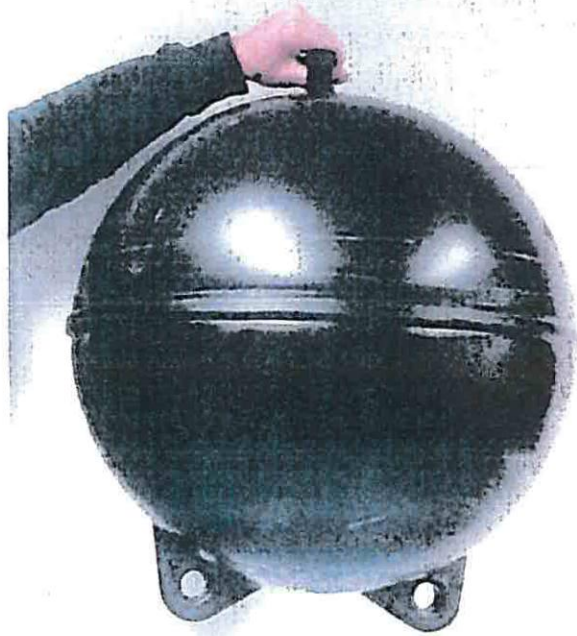
Sub Sea Floats

Lines are set up with a combination of surface floats and smaller subsea heavy-duty PPE floats. These floats are either hard tied, or short dropper tied to the anchor warp for the purpose of providing tension should it be required. PPE floats are heavy walled, injection moulded with various working depths from 40mtrs to 100mtrs depending on the size. Eyes or lugs in these injection moulded floats are solid plastic, offering very strong rope supports and extremely long life. These can be seen on the single long-line layout drawing.



Sub Sea Floats

Lines are set up with a combination of surface floats and smaller subsea heavy-duty PPE floats. These floats are either hard tied, or short dropper tied to the anchor warp for the purpose of providing tension should it be required. PPE floats are heavy walled, injection moulded with various working depths from 40mtrs to 100mtrs depending on the size. Eyes or lugs in these injection moulded floats are solid plastic, offering very strong rope supports and extremely long life. These can be seen on the single long-line layout drawing.





Farm Ropes, Anchor Warps and Mainlines

Spat Catching Rope

- Spat Catching Rope extra heavy duty, Loop or cut.6L x 2000mtrs
- Cut Loop Spat Extra Heavy Duty. 5L, or 6L.
- Cut Loop Spat Catching,
- 18mm core x 2000mtr Carbon Black, 55-65mm de-waxed cut trims,
- PVC coated wires as required in core.



Dewaxed highly fibrillated fibres, formed in a net like structure, simulating natural algae environments.

Maintenance

After harvest the Spat catching ropes and harvest ropes are washed and brushed. The ropes will be inspected, and where necessary old lashing and or fouling is removed. The ropes are transferred from one bulk bag to another allowing the operator to visually inspect the ropes and to make sure it has not acquired any torque from the harvesting process. Brushing has the added advantage of re vitalizing the cut or loop trims to ensure the best presentation to the mussels when re deployed.

Anchor Rope and Mainlines

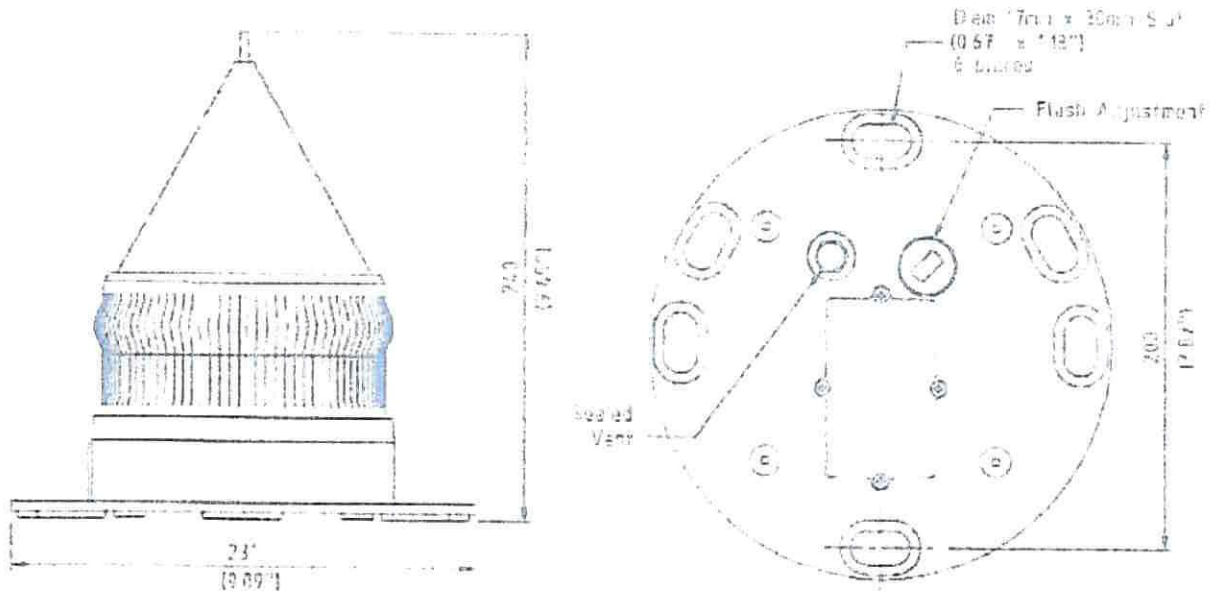
- UV treated. HI Fib De wax
- Durashield 32mm, Hard lay, Carbon black, 32mtrs x175mtrs
- 32mm x 220mtr Medium or Hard Lay Carbon Black or Std Colours,
- B/load 16800kg, weight 106.05g



Lashing Ropes for Droppers

Danlash, 5mm x 500mtr Soft Carbon Black with Red fleck B/load 465kg,
weight 5.50kg





Light Characteristics

Light Source	6 ultra-high intensity LEDs
Available Colours	Red, Green, White, Yellow, Blue
Maximum Available Intensity (cd/m ²)	Red - 11.4 Green - 20.0 White - 25.0 Yellow - 10.0
Visible Range (nm)	2-3+
Horizontal Output (degrees)	360
Vertical Divergence (degrees)	9
Reflector type	Unidirectional 360° LED Reflector (US Pat. No. 6,557,552 AU Pat. No. 773,915)
Available Flash Characteristics	Up to 250 Hz recommended (user adjustable)
Intensity Adjustments	Adjustable in 25% increments
LED life expectancy (hrs)	>100,000

Electrical Characteristics

Current Draw (mA)	375 (1.5 amp @ 250mA max)
Circuit Protection	Integrated
Nominal Voltage (v)	3.2
Autonomy (days)	100 (200hrs @ 12.5% duty cycle)
Temperature Range	-20° to 70°C

Solar Characteristics

Solar Module Type	Multi-junction
Output (watts)	2.5 (2x 1.25watts)
Solar Module Efficiency (%)	14
Charging Regulation	Microprocessor controlled

Power Supply

Battery Type	High grade NiMH (rechargeable)
Battery Capacity (Ah)	6
Current (mA)	100
Battery Storage Life	Average 6 months

Physical Characteristics

Body Material	EXAM® Polycarbonate - UV stabilised
Lens Material	EXAM® Polycarbonate - UV stabilised
Lens Diameter (mm/inches)	150 / 5 7/8
Lens Design	External optics with internal flute design
Mounting	200mm OD base pattern
Height (mm/inches)	240 / 9 1/2
Width (mm/inches)	231 / 9 1/8
Mass (kg/lbs)	1.4 / 3 1/8 (SL70/15Ah 1.6 / 3 1/2)
Product Life Expectancy	Up to 12 years
Certifications	
CE	EN61000-6-3:1997 EN61200-6-1:1997
Quality Assurance	ISO9001:2008
Waterproof	IP68



Image 1: Signage for accessibility

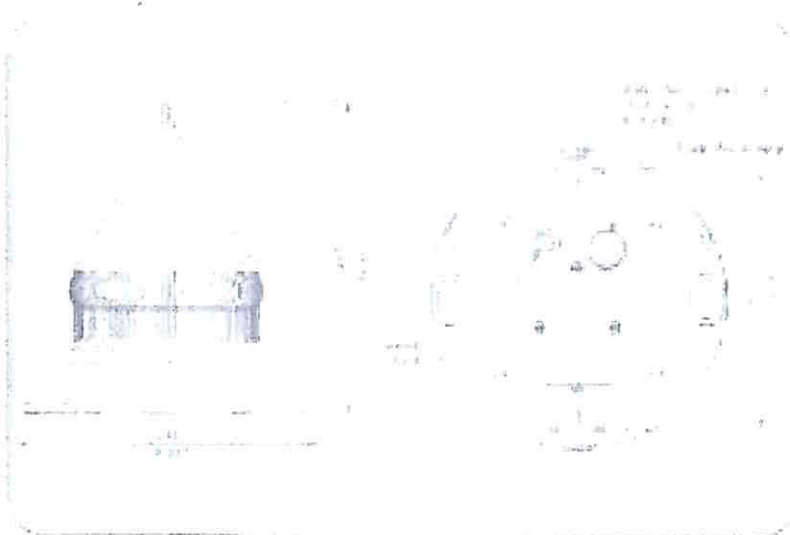


Image 2: Signage post

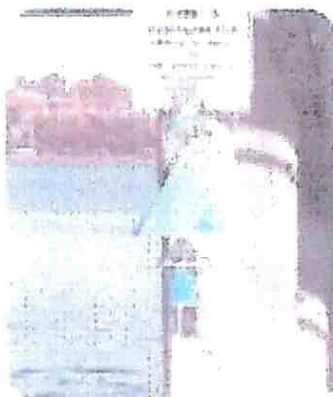


Image 3: Signage post



SPECIFICATIONS

Light Characteristics

Available in:
 Standard
 High
 Medium
 Low
 Ultra High
 Ultra Low
 Ultra High
 Ultra Low

Available in:
 Standard
 High
 Medium
 Low
 Ultra High
 Ultra Low

Electrical Characteristics

Power Source:
 Standard
 High
 Medium
 Low
 Ultra High
 Ultra Low

Power Supply

Power Source:
 Standard
 High
 Medium
 Low
 Ultra High
 Ultra Low

Physical Characteristics

Dimensions:
 Standard
 High
 Medium
 Low
 Ultra High
 Ultra Low

Construction

Material:
 Standard
 High
 Medium
 Low
 Ultra High
 Ultra Low

Installation Requirements

Installation:
 Standard
 High
 Medium
 Low
 Ultra High
 Ultra Low

Warranty

Warranty:
 Standard
 High
 Medium
 Low
 Ultra High
 Ultra Low

Options Available

Options:
 Standard
 High
 Medium
 Low
 Ultra High
 Ultra Low

Available in:
 Standard
 High
 Medium
 Low
 Ultra High
 Ultra Low

Available in:
 Standard
 High
 Medium
 Low
 Ultra High
 Ultra Low

Available in:
 Standard
 High
 Medium
 Low
 Ultra High
 Ultra Low

Available in:
 Standard
 High
 Medium
 Low
 Ultra High
 Ultra Low

Available in:
 Standard
 High
 Medium
 Low
 Ultra High
 Ultra Low

Available in:
 Standard
 High
 Medium
 Low
 Ultra High
 Ultra Low

Available in:
 Standard
 High
 Medium
 Low
 Ultra High
 Ultra Low

Available in:
 Standard
 High
 Medium
 Low
 Ultra High
 Ultra Low

